

Peckham, G. W. and E. G. Peckham. 1901. On spiders of the family Attidae found in Jamaica. Proceedings of the Zoological Society of London for 1901 (2): 6-16, plates II-IV.

This digital version was prepared from the original document, with the exception of page 6, for which a typewritten copy was used as the source. All added text that was not included in the source, or corrected misspellings, are highlighted in red. In the original document, not all scientific names, particularly those in headers, were italicized.

1. On Spiders of the Family Attidae found in Jamaica.

By G. W. PECKHAM and E. G. PECKHAM¹

(Received April 12, 1901.)

(Plates II.-IV.²)

Most of the spiders described in this paper were collected by us some years ago. We have also received some specimens from Mr. T. D. A. Cockerell, and from Mr. Taylor of Kingston. Other Attidae that have been described from Jamaica are: *Marptusa melanognathus* Lucas; *Saitis annae* Cockerell, 'Canadian Entomologist,' p. 343, 1894; *Anoka peckhamii*, Cockerell, 'Journal of Institute of Jamaica,' vol. ii. p. 221, 1893; *Zygoballus suavis* Peckham, "Spiders of the *Homalattus* Group," Occ. Papers Nat. Hist. Soc. of Wisconsin, vol. ii. p. 173; *Anoka moneagua* Peckham, "Spiders of the *Marptusa* Group," Occ. Papers Nat. Hist. Soc. of Wisconsin, vol. ii. p. 127, 1894, is identical with *Anoka peckhamii* Cockerell. The thirteen species now described probably give a fair idea of the Attid fauna of the island. The genera are like those of Central and North America, excepting *Cybele*, which we have from St. Vincent, and *Nilakantha*, which is new.

Key to the Attidae of Jamaica.

Males.

- 1 Legs of the first, third, and fourth pairs nearly equal; cephalothorax with red hairs and white bands on the thoracic slope and lower sides; length 5.5-6.5 mm ***Cybele grisea.***
- First and fourth, or first and third, or third and fourth legs plainly longer than the others2
- 2 Legs $\overline{1\ 3\ 4\ 2}$; palpus blackish, with a fringe of very long white hairs on each side to the end of tarsus ***Cybele albopalpis.***
- First and fourth legs longer than the others 3
- Third and fourth legs longer than the others 4

¹ Communicated by R. I. Pocock, F. Z. S.
² For the explanation of the Plates, see pp. 15, 16.

- 3 Legs $\overline{1\ 4\ 3\ 2}$; spiders small (4.5 mm.), and pale yellow in color, with four square black spots on the eye-region *Nilakantha cockerelli*.
- Legs $\overline{1\ 4\ 3\ 2}$; small spiders (2-3 mm.); palpus brown, with a narrow white line on the outer side *Prostheclina viaria*.
- Legs $1\ 4\ 2\ 3$; small spiders (4.5 mm.); cephalothorax brown, with white bands on sides and red down the upper surface and around eyes *Anoka peckhami*.
- Legs $1\ 4\ 2\ 3$; small spiders (3.5 mm.); abdomen brown, encircled with white, with three or four pairs of white spots *Dendryphantes prudens*.
- Legs $1\ 4\ \overline{2\ 3}$; small spiders (4-5 mm.); cephalothorax and abdomen bronze-brown encircled with white *Dendryphantes taylori*.
- Legs $\overline{1\ 4\ 2\ 3}$; medium-sized spiders (8 mm.); abdomen with median band of dark rufous and white sides *Marpusa melanognathus*.
- Legs $1\ 4\ 2\ 3$; falces long, oblique; quadrangle of eyes occupying more than one-half cephalothorax *Zygoballus suavis*.
- 4 Legs $3\ 4\ \overline{1\ 2}$; length about 4.5 mm.; cephalothorax fawn-coloured, with light bands on sides, curving backwards over thorax to dorsal eyes *Pellenes translatus*.
- Legs $\overline{3\ 4\ 1\ 2}$; body and legs with crimson and green iridescent scales *Prostheclina perplexa*.
- Legs $\overline{3\ 4\ 1\ 2}$; abdomen iridescent, with four velvety black spots *Prostheclina morgani*.
- Legs $\overline{3\ 4\ 1\ 2}$; abdomen brown, with longitudinal, median, yellow band *Prostheclina venatoria*.
- Legs $\overline{4\ 3\ 2\ 1}$; cephalothorax with red hairs and white bands on sides *Saitis (?) inutilis*.
- Legs $\overline{4\ 3\ 1\ 2}$; length about 3.5 mm.; cephalothorax and abdomen each with a V-shaped black mark; palpus with terminal portion red-brown, becoming black at end; middle portion with tuft of shining white hairs *Saitis annae*.

Females.

- 1 Legs $1\ 4\ 2\ 3$ *Anoka peckhami*.
- Legs not $1\ 4\ 2\ 3$ 2
- 2 Legs $4\ 1\ \overline{2\ 3}$ or $\overline{4\ 1\ 2\ 3}$ 3
- Legs not $4\ 1\ \overline{2\ 3}$ or $\overline{4\ 1\ 2\ 3}$ 4
- 3 Quadrangle occupying plainly more than one-half of the cephalothorax; cephalothorax plainly widest at the dorsal eyes; legs $4\ 1\ 2\ 3$ *Zygoballus suavis*.
- Quadrangle occupying less than one-half of the cephalothorax; cephalothorax not widest at dorsal eyes; legs $4\ 1\ 2\ 3$ *Dendryphantes prudens*.
- 4 Legs $4\ 3\ 1\ 2$ or $\overline{4\ 3\ 1\ 2}$ 5
- Legs $3\ 4\ 1\ 2$, $\overline{3\ 4\ 1\ 2}$ or $\overline{3\ 4\ 1\ 2}$ 6
- 5 Spiders small (4.5 mm.), pale yellow, with four square black spots on eye-region; legs $4\ 3\ 1\ 2$ *Nilakantha cockerelli*.
- Spiders large (9.5 mm.); dorsum of abdomen gray, with wavy outlines; dark bands on sides; legs $4\ 3\ 1\ 2$ *Marpusa melanognathus*.
- Spiders small (4.5 mm.); cephalothorax with golden iridescent scales except a white band on thorax; legs $4\ 3\ 1\ 2$ *Saitis defloccatus*.

- 6 Spiders covered with light brown hairs and a few longer black hairs; 3 4 1 2 *Pellenes banksi*.
 Abdomen brown, with a longitudinal, median, yellow band; legs $\overline{3\ 4\ 1\ 2}$ *Prostheclina venatoria*.
 Abdomen iridescent, with four velvety black spots; legs $\overline{3\ 4\ 1\ 2}$ *Prostheclina morgani*.
 Green and crimson iridescent scales on cephalothorax, abdomen, and legs *Prostheclina perplexa*.

***Nilakantha*, n. gen.**

Small, pale spiders.

The cephalothorax is moderately high and is widest and highest behind the dorsal eyes. The sides are slightly contracted in front and behind. The cephalic part is a little inclined, and the thorax falls steeply from just behind the dorsal eyes. The quadrangle of the eyes is one-third wider than long, is a little wider behind than in front, and occupies one-half of the cephalothorax. The first row of eyes is plainly curved downward, the eyes being all close together, with the middle twice and a half as large as the lateral. The second row is nearer the first than the third, and the third row is as wide as the cephalothorax at that place. The legs in the male are $1\ 4\ \overline{3}\ 2$, and in the female $4\ 3\ 1\ 2$.

This genus resembles, in a general way, our *Plexippus puerperus* Hentz (Attidae of North America, p. 33), but the spiders are smaller, the curve of the first row is different, and the middle eyes of this row are larger.

***Nilakantha cockerelli*, n. sp. (Plate II, figs. 1–1g.)**

- ♂. Length 4.5 mm. Legs $\overline{1\ 4\ 3\ 2}$, first a little stoutest.
 ♀. Length 4.5-5.5 mm. Legs $4\ 3\ 1\ 2$, first stoutest.

This is a small, pale, yellow species, with four square black spots on the eye-region. The lateral eyes of the first row and the small eyes of the second row are upon the front pair of spots, and the dorsal eyes on those that are further back. The clypeus and the sides of the cephalothorax are covered with light yellow hairs, which are found also in the spaces between the four black spots. The abdomen is marked with black specks, which form, more or less distinctly, lines of chevrons over the dorsum. The male has a band of yellow hairs around the front end and the sides. The falcis, palpi, and legs are yellow, a little darker in the male.

We have one male and three females from Moneague and Kingston, Jamaica.

This species is named after Mr. T. D. A. Cockerell, of Las Cruces, New Mexico.

***Cybele grisea*, n. sp. (Plate II, figs 2–2e.)**

- Length, ♂ $\overline{5.5-6.5\ mm}$, ♀ 6-7 mm.
 Legs, ♂ $\overline{1\ 3\ 4\ 2}$; ♀ $4\ 3\ 1\ 2$, not very unequal.

The cephalothorax is high, with the cephalic part inclined,

while the thoracic falls very slightly in the first third, and then abruptly. The sides are vertical and nearly parallel, there being a very slight widening behind the dorsal eyes. The anterior eyes are close together in a straight row. They are large, the lateral being two-thirds the size of the middle. The second row is about halfway between the first and the third, and the third is about as wide as the cephalothorax. The quadrangle of the eyes is one-fourth wider than long, occupies one-half of the cephalothorax, and is equally wide in front and behind.

In the male, the cephalothorax is covered with red hairs, excepting bands of white hairs on the lower sides, and a white median band on the thoracic slope, running backward from the third row of eyes. On the abdomen the hairs are golden-yellow; down the middle, in the anterior half, is a narrow white band, which changes, in the posterior half, into a band of white chevrons. A narrow white band runs around the anterior end and onto the sides, curving upward and inward opposite the point at which the chevrons begin. The legs are pale, with the femur dark in some specimens. The palpus has the patella much elongated, nearly **equaling** the tibia and tarsus. The patella and tibia are flattened and rugose on the dorsal surface, and there is an apophysis on the inner distal end of the patella. There is a fringe of white hairs throughout the whole length of the palpus, on the inner side. The falces are as wide as the middle eyes and are transversely rugose. In the middle, on the outer edge, is a small apophysis which is edged with minute notches, and below this, near the insertion of the fang, there is a longer, pointed apophysis. The lip is narrow, and only half as long as the maxillae, which are notched on the middle of the outer edge and project at the outer corner. The female has golden-yellow hairs on the cephalic plate, and has the eyes on dark spots. There are indistinct bands of a lighter colour on the sides and down the median line of the thoracic part. On the abdomen the hairs are red, and there is a yellowish band which passes around the front end onto the sides, from which a short projection runs backward in the middle line. On the middle dorsum there is a white region with wavy outlines, which is mottled with red.

We have numerous examples of both sexes.

***Cybele albopalpis*, n. sp. (Plate II. figs. 3–3b.)**

♂. Length 5.5 mm. Legs $\overline{1\ 3\ 4\ 2}$, the first plainly stoutest, and longer than the second by the tarsus and half the metatarsus.

The cephalothorax is rather high, and slants in both directions from the dorsal eyes, the hinder slope being almost continuous. The anterior eyes are large, and form a slightly curved row, the middle ones touching, and the lateral a little separated from them. The middle are less than twice as large as the lateral. The second row is about halfway between the first and the third. The dorsal eyes are large, and form a row which is as wide as the cephalo-

thorax at that place. The sides of the cephalothorax are vertical, and are nearly parallel, widening a little in the middle. The quadrangle of the eyes is plainly wider in front than behind, is one-fifth wider than long, and occupies one-half of the cephalothorax.

In our specimen the hairs are all rubbed from the abdomen. The cephalothorax is blackish, with red hairs on the eye-region, a white band down the middle of the thoracic slope, and white bands low on the sides. Under alcohol the pattern appears as in the drawing. The palpus is blackish, with a fringe of very long white hairs on each side, extending to the end of the tarsus. The tibia is flattened. The first leg has the femur and tibia reddish, but otherwise the legs are pale, with many fine black spines. The falces are vertical and moderately stout. This species differs from *C. grisea* in having no apophyses on the falces, in the maxillae, which are rounded and short, and in having the patellae of the palpus shorter than the tibia, instead of much longer.

We have a single male of this species.

***Saitis (?) inutilis*, n. sp. (Plate III. figs. 4–4b.)**

♂. Length 3.5 mm. Legs $\overline{4\ 3\ 2\ 1}$, all slender, and decreasing very gradually in length from the fourth to the first. Second longer than first by tarsus.

The cephalothorax is rather high, and falls distinctly, in both directions, from the dorsal eyes. Its widest point is plainly at the front end, the sides contracting gradually behind. The quadrangle of the eyes occupies about one-half of the cephalothorax. It is only one-fifth wider than long, and is a very little wider in front than behind. The anterior eyes are all large, and are placed close together in a plainly curved row, the middle being less than twice as large as the lateral. The eyes of the second row are about halfway between the lateral and the dorsal, and the third row is as wide as the cephalothorax at that place.

When under alcohol the cephalothorax is brown above, with a pale scalloped band down the middle, and is pale on the sides. The abdomen has the sides brown speckled with white, and a pale central band, which has an enlargement at the middle point, and which is crossed by a number of short pale bars, which form chevrons. In one specimen there is, on each of the anterior sides, a pale spot, and further back there is a short curved pale band, of which only the extremities are visible from above. When dry the upper part of the cephalothorax is seen to be covered with red, and the sides with white hairs. The red hairs grow a little longer above the eyes of the first row, and below them the clypeus is covered with white or yellowish-white hairs. On the abdomen the dark parts are covered with red, and the pale with white hairs. The legs are brown, flecked with pale, the first and second being darker than the third and fourth. The palpus is brown, with rather long white hairs on the tibia and tarsus. The falces are small, vertical, and brown.

We have two males of this spider.

***Saitis defloccatus*, n. sp. (Plate III. figs 5, 5a.)**

♀. Length 4.5 mm. Legs $\overline{4\ 3\ 1\ 2}$, all slender. The first is almost as long as the third and fourth, but the second is distinctly shorter, the first exceeding it by the length of the tarsus.

The cephalothorax is high at the dorsal eyes, from which point it is strongly inclined in both directions. The upper surface is rounded. The sides are widest at the dorsal eyes, narrowing before and behind, and widening again at the front end. The anterior eyes are close together, the middle being nearly twice as large as the lateral, and form a row which is a little curved downward. The clypeus is narrow. The quadrangle of the eyes is wider in front than behind, is one-fourth wider than long, and occupies nearly one-half of the cephalothorax.

Under alcohol the spider appears as in Mr. Emerton's drawing, but when dry the cephalothorax is seen to be, covered with light, golden, iridescent scales, excepting a central white band on the thoracic part. The abdomen has a white band around the front end, but is otherwise covered with silvery iridescent scales, there being some wavy black lines and spots on the posterior part of the dorsum. The legs and palpi are pale brown, ringed with darker brown. The falces are small and brown.

We have one female from Kingston.

***Pellenes translatus*, n. sp. (Plate III. figs. 6–6c.)**

♂. Length 4.5 mm. Legs $3\ 4\ \overline{1\ 2}$. The first and second are considerably shorter than the third and fourth, and the third is longer than the fourth by the length of the tarsus; first stoutest.

The cephalothorax is moderately high. The cephalic plate slants forward; the upper surface and sides are normal for the genus. The anterior legs are close together in a straight row; the middle are not twice as large as the lateral. The quadrangle is a little wider behind, and nearly one-fourth wider than long. The second row is halfway between the outer two, and the third row is as wide as the cephalothorax at that place. One specimen is a good deal rubbed, and under alcohol it appears as in Mr. Emerton's drawing; but when dry, the upper surface of the cephalic part is covered with fawn-coloured hairs, and on each side of the head and thorax there is a wide band of white hairs. These bands are on the lower edge, and unite behind with a wide white band that runs back, on each side, from just behind the dorsal eye, down the posterior slope of the thorax. The space between the two white bands on the posterior slope of the thorax is dark-coloured. The lower white bands, as they pass forward, do not unite in front on the clypeus, but turn down and end in a narrow point on the front face of each falx. The space thus left, under the middle eyes of the first row, is dark-coloured. There are a very few red hairs around the first row of eyes. The abdomen is dark above, nearly surrounded by a wide white band which passes very far down on the sides and stops at the spinnerets. There is a central longitudinal white band from base to apex of

the abdomen. The femora of all the legs are pale, darker at the distal ends, and the first and second pairs have black bands on the front faces, running obliquely from end to end. This band is much less distinct on the second pair. The other parts of the legs are darker, and all have many white hairs. The palpi have pale femora and patellae, covered with white hairs, while the other joints are dark. The dark spot on the clypeus, just under the large middle eyes, is characteristic, and serves to distinguish this from all other spiders thus far found in Jamaica.

Found by Mr. T. D. A. Cockerell at Mandeville.

***Pellenes banksi*, n. sp. (Plate III. figs. 7, 7a.)**

♀. Length 5 mm. Legs 3 4 1 2; first and second much shorter than third and fourth; second is shorter than third by the length of the metatarsus and tarsus; the length of the third is due to the elongation of the femur; the first and second stoutest.

The quadrangle is one-fourth wider than long, is a little wider behind than in front, and occupies two-fifths of the cephalothorax. The anterior eyes are close together and are a little curved. The middle are not twice as large as the lateral. The second row is halfway between the others, and the third is as wide as the cephalothorax at that place. The whole body and the legs are covered by short hairs, light brown in colour, with a few longer black hairs. Under alcohol the pattern appears as in the drawing.

We have a single female from Kingston.

***Prostheclina perplexa*, n. sp. (Plate III. figs. 8–8d.)**

A brilliantly iridescent species.

♂ ♀. Length 5 mm. Legs $\overline{3\ 4\ 1\ 2}$, the third and fourth decidedly longer than the first and second.

The quadrangle of the eyes is wider in front than behind, occupies two-fifths of the cephalothorax, and is one-fourth wider than long. The anterior eyes project forward and form a slightly curved row, all four being close together, and the middle being plainly less than twice as large as the lateral. The second row is about halfway between the first and third, and the third is narrower than the cephalothorax at that place.

Although we have a good many specimens of this beautiful little spider, they are all more or less rubbed. Under alcohol it appears as in the drawing, with brown background and pale bands. When dry it shows iridescent scales of bright green and crimson on the cephalothorax, and around the front end of and down the middle line of the abdomen, which is otherwise covered with fawn-coloured or golden hair. The clypeus is covered with long iridescent hairs, and the front surface of the falces with iridescent scales. The same scales appear on all of the legs, and on the tibia and tarsus of the palpus. The males are darker than the females,

and have at the end of the femur, and on the patella of the palpus, a bunch of long snow-white hairs.

We have numerous examples from Mandeville.

***Prostheclina morgani*, n. sp. (Plate IV. Figs. 9–9d.)**

Length, ♂ 4 mm., ♀ 4.3 mm. Legs, ♂ $\overline{3}$ $\overline{4}$ $\overline{1}$ $\overline{2}$; ♀ $\overline{3}$ $\overline{4}$ $\overline{1}$ $\overline{2}$; the first and second are slightly the stoutest and are plainly shorter than the others.

The quadrangle of the eyes is one-fourth wider than long, is a little wider in front than behind, and occupies nearly one-half of the cephalothorax. The anterior eyes are close together in a straight row, the lateral being nearly three-fourths as large as the middle. The second row is halfway between the first and the third, and the third is nearly as wide as the cephalothorax at that place.

The cephalothorax is covered with a mixture of white and iridescent scales. The abdomen is also iridescent with the exception of four large velvety, black spots. The legs are pale brown with white scales. The palpus has iridescent scales mixed with white hairs on the patella and tibia, and with dark hairs on the tarsus. The white hairs are long and conspicuous in the male. The clypeus and falces have white scales in the female, and iridescent scales in the male.

The apophysis on the palpus of the male is notched along the inner edge, like a saw.

We have six specimens from Kingston.

***Prostheclina venatoria*, n. sp. (Plate IV. figs. 10–10d.)**

♂ ♀. Length 3.5 mm. Legs $\overline{3}$ $\overline{4}$ $\overline{1}$ $\overline{2}$, the third being longest through the elongation of the femur, and exceeding the second by the length of the tarsus. The first and second are the stoutest.

The cephalothorax is moderately high. The sides are parallel in the female, but widen a little toward the front in the male; they are nearly vertical. The cephalic part is rounded and inclined forward. The thorax falls but little in the first half, and is narrowed and rounded above, widening out a little below. The quadrangle of the eyes is one-fifth wider than long, is plainly wider in front than behind, and occupies a little more than two-fifths of the cephalothorax. The anterior eyes are close together in a straight row, the lateral being nearly two-thirds as large as the middle. They are rather large for the size of the spider. The second row is plainly nearer the third than the first, especially in the male. The third is about as wide as the cephalothorax at that place.

Our specimens are rubbed. The male shows some metallic scales on the eye-region, and has, on each side, a band of yellow hairs, starting from the lateral eye, and widening as it passes backward to join the one of the opposite side beyond the dorsal eyes. The cephalothorax is otherwise dark brown. The abdomen is brown

and has, down the median line, a yellow band which becomes indistinct behind. The anterior sides show some greenish metallic scales. The legs are brown excepting the tarsal and the proximal ends of the femoral joints, which are pale. The palpus has black hairs on the femur, and yellow hairs on the patella, tibia, and tarsus, most marked on the patella, and on all the joints there is a scattering of metallic scales. The female shows no hairs nor scales, but is brown with a yellow, median, longitudinal band on the abdomen. The legs are pale.

We have one male and one female from Port Antonio.

***Prostheclina viaria*, n. sp. (Plate IV. figs. 11–11b.)**

♂. Length 2.5-3 mm. Legs $\overline{1\ 4\ 3\ 2}$, femur slightly enlarged in first and second; the first and fourth are nearly equal, and are longer than the third by only a part of the tarsus; the first is longer than the second by the tarsus and a part of the metatarsus.

The cephalothorax is moderately high. The sides are a very little wider in front and are nearly vertical. The highest point is at the dorsal eyes, the cephalic plate being inclined, while the thoracic part falls but little for about one-third of its length, and then abruptly, the upper surface not being so much narrowed and rounded as is usual in *Prostheclina*. The clypeus is narrow. The anterior eyes are close together in a straight row, the lateral being two-thirds as large as the middle. The second row is much nearer the third than the first, and the third is nearly as wide as the cephalothorax at that place. The quadrangle of the eyes is very slightly wider in front than behind, is one-fourth wider than long, and occupies one-half of the cephalothorax.

Our specimens are badly rubbed. Under alcohol the pattern appears as in the drawing, but when dry the whole body looks dark, with a covering of light brown hairs. In the first and second legs the femur has the proximal end pale, and the distal end dark. Otherwise the legs are pale with darker rings. The palpus is brown, with a narrow line of white hairs running along the outer side of all the joints.

We have two males from Moneague.

***Dendryphantes taylori*, n. sp. (Plate IV. figs. 12–12b.)**

♂. Length 4.5 mm. Legs $1\ 4\ \overline{2\ 3}$, the first a very little the stoutest, all being rather slender; the first and fourth do not differ greatly in length, but these two are plainly longer than the second and third. The coxa of the first leg is twice as long as that of the second.

The quadrangle of the eyes is one-third wider than long, is wider behind than in front, and occupies one-half of the cephalothorax, approaching, in this respect, the genus *Eris*. The first row is straight, with the middle eyes subtouching and about twice as large as the lateral, which are a little separated from them. The second row is a little nearer to the first than to the third. The abdomen

is bronze-brown, with a white band around the front end, which runs, on the sides, nearly to the spinnerets, with a break at about the middle point. There are two pairs of white spots or transverse bars on the dorsum, one pair across the middle, and the other further back. The cephalothorax is bronze-brown, with a white band across the clypeus which runs back on to the sides. The legs are dark brown, with the tarsi and the proximal ends of the metatarsi lighter. The palpi are long, curving over the falces, and have the femur and patella covered, above, with white hairs. The falces are brown in colour, and are long, oblique, and divergent, with a long fang.

We have a single male.

***Dendryphantes prudens*, n. sp. (Plate IV. Figs. 13–13b.)**

Length, ♂ 3.5 mm., ♀ 4.5 mm. Legs, ♂ 1 4 2 3, ♀ 4 1 $\overline{23}$, the first stoutest.

The quadrangle of the eyes occupies two-fifths of the cephalothorax, is one-fourth wider than long, and is a little wider behind than in front. The first row is curved, with the middle eyes subtouching and less than twice as large as the lateral, which are a little separated from them. In the male, the cephalothorax is bronze-brown with white bands on the sides. The abdomen is brown with an encircling band of white, and three or four pairs of white spots on the dorsum. The legs are barred with lighter and darker brown. The female has the cephalothorax brown with tawny hairs, the abdomen pale with some brown chevrons, and the legs yellow. The falces are brown, short, and vertical. The male has an apophysis on the tibia of the palpus.

We have two males and one female from Kingston.

EXPLANATION OF THE PLATES.

PLATE II.

- Fig. 1. *Nilakantha cockerelli* (p. 8), dorsal view of female; 1a, dorsal view of male; 1b, side view of cephalothorax of female; 1c, face of male; 1d, epigynum; 1e, dorsal view of palpus; 1f, side view of palpus; 1g, ventral view of palpus.
- Fig. 2. *Cybele grisea* (p. 8), dorsal view of male; 2a, dorsal view of female; 2b, epigynum; 2c, ventral new of palpus; 2d, side view of palpus; 2e, face and falces of male.
- Fig. 3. *Cybele albopalpis* (p. 9), dorsal view of male; 3a, ventral view of palpus; 3b, side view of palpus.

PLATE III.

- Fig. 4. *Saitis (?) inutilis* (p. 10), dorsal view of male; 4a, ventral view of palpus; 4b, side view of palpus.
- Fig. 5. *Saitis defloccatus* (p. 11), dorsal new of female; 5a, epigynum.
- Fig. 6. *Pellenes translatus* (p. 11), dorsal view of male; 6a, ventral new of palpus; 6b, dorsal view of palpus; 6c, side view of palpus.
- Fig. 7. *Pellenes banksi* (p. 12), dorsal view of female; 7a, epigynum.
- Fig. 8. *Prostheclina perplexa* (p. 12), dorsal view of male; 8a, dorsal view of female; 8b, ventral view of palpus; 8c, side view of palpus; 8d, epigynum.

PLATE IV.

- Fig. 9. *Prostheclina morgani* (p. 13), dorsal view of male; 9a, dorsal view of female; 9b, ventral view of palpus; 9c, side view of palpus; 9d, epigynum.
- Fig. 10. *Prostheclina venatoria* (p. 13), dorsal view of male; 10a, dorsal view of female; 10b, ventral view of palpus; 10c, side view of palpus; 10d, dorsal view of palpus.
- Fig. 11. *Prostheclina viaria* (p. 14), dorsal view of male; 11a, ventral view of palpus; 11b, side view of palpus.
- Fig. 12. *Dendryphantes taylori* (p. 14), dorsal view of male; 12a, ventral view of palpus; 12b, side view of palpus.
- Fig. 13. *Dendryphantes prudens* (p. 15), dorsal view of male; 13a, ventral view of palpus; 13b, side view of palpus.

In this digital version, figure captions are also presented opposite respective plates for ease of reference.

PLATE II.

- Fig. 1. *Nilakantha cockerelli* (p. 8), dorsal view of female; 1*a*, dorsal view of male; 1*b*, side view of cephalothorax of female; 1*c*, face of male; 1*d*, epigynum; 1*e*, dorsal view of palpus; 1*f*, side view of palpus; 1*g*, ventral view of palpus.
- Fig. 2. *Cybele grisea* (p. 8), dorsal view of male; 2*a*, dorsal view of female; 2*b*, epigynum; 2*c*, ventral new of palpus; 2*d*, side view of palpus; 2*e*, face and falces of male.
- Fig. 3. *Cybele albopalpis* (p. 9), dorsal view of male; 3*a*, ventral view of palpus; 3*b*, side view of palpus.

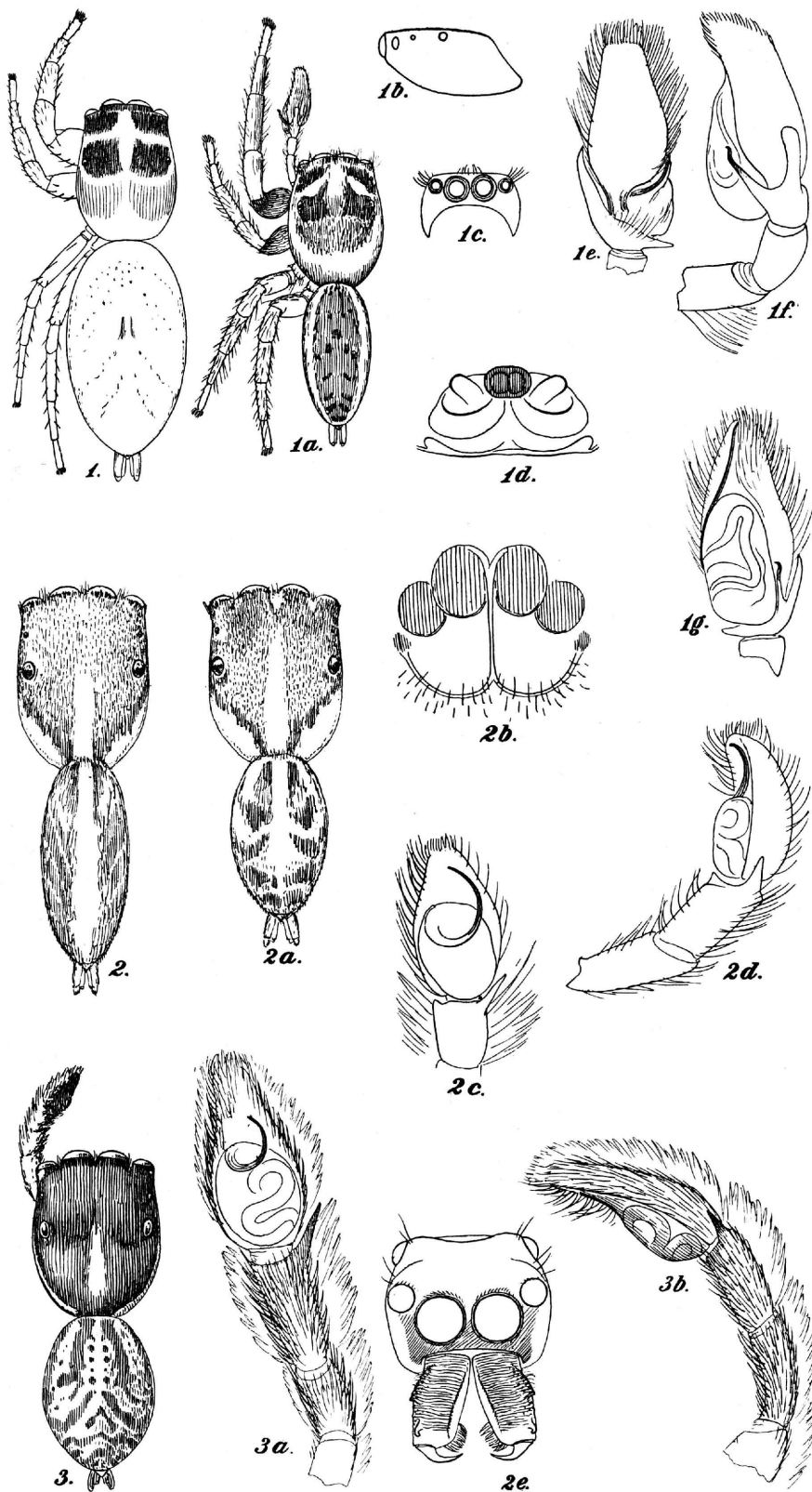


PLATE III.

Fig. 4. *Saitis (?) inutilis* (p. 10), dorsal view of male; 4*a*, ventral view of palpus; 4*b*, side view of palpus.

Fig. 5. *Saitis defloccatus* (p. 11), dorsal view of female; 5*a*, epigynum.

Fig. 6. *Pellenes translatus* (p. 11), dorsal view of male; 6*a*, ventral view of palpus; 6*b*, dorsal view of palpus; 6*c*, side view of palpus.

Fig. 7. *Pellenes banksi* (p. 12), dorsal view of female; 7*a*, epigynum.

Fig. 8. *Prostheclina perplexa* (p. 12), dorsal view of male; 8*a*, dorsal view of female; 8*b*, ventral view of palpus; 8*c*, side view of palpus; 8*d*, epigynum.

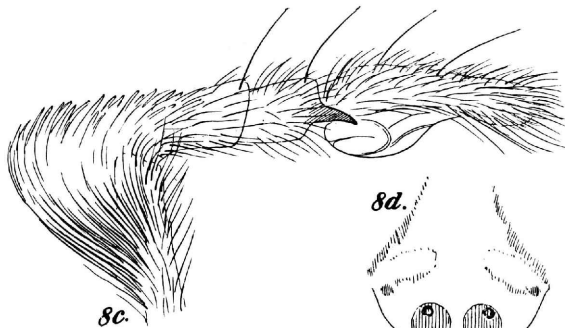
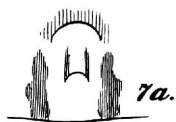
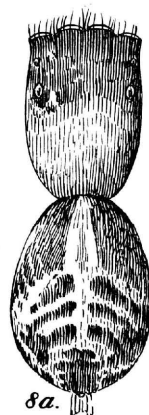
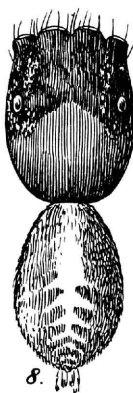
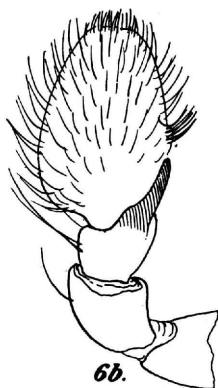
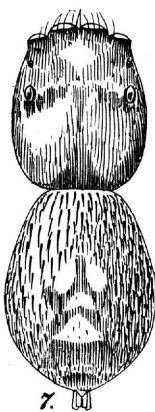
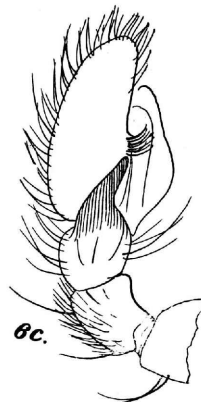
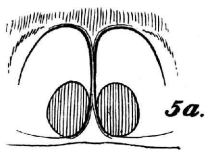
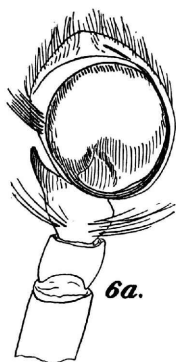


PLATE IV.

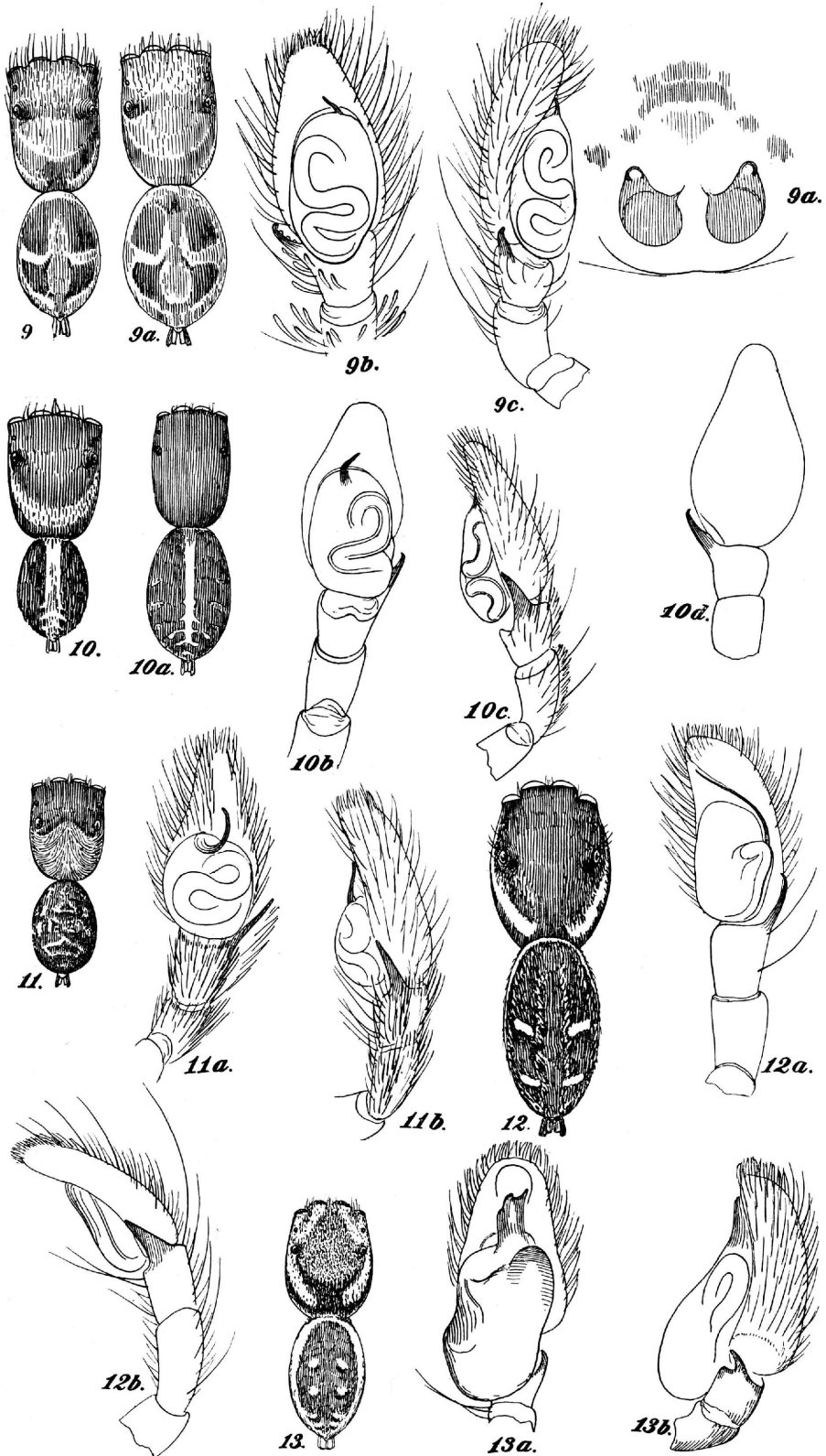
Fig. 9. *Prostheclina morgani* (p. 13), dorsal view of male; 9a, dorsal view of female; 9b, ventral view of palpus; 9c, side new of palpus; 9d, epigynum.

Fig.10. *Prostheclina venatoria* (p. 13), dorsal view of male; 10a, dorsal view of female; 10b, ventral view of palpus; 10c, side view of palpus; 10d, dorsal view of palpus.

Fig.11. *Prostheclina viaria* (p. 14), dorsal view of male; 11a, ventral view of palpus; 11b, side view of palpus.

Fig.12. *Dendryphantes taylori* (p. 14), dorsal view of male; 12a, ventral view of palpus; 12b, side view of palpus.

Fig.13. *Dendryphantes prudens* (p. 15), dorsal view of male; 13a, ventral view of palpus; 13b, side view of palpus.



NEW ATTIDAE FROM JAMAICA.