

Peckham, G. W. and E. G. Peckham. 1893. On the spiders of the family Attidae of the Island of St. Vincent. Proceedings of the Zoological Society of London 47: 692-704, plates LXI-LXII (1894).

Added text, not in the original document, is highlighted in red. Only a typed copy of page 692 was available, and two obvious errors in that typed copy have been corrected here (also in red). Note that the plates were dated one year after the original publication. Scientific names were not italicized in the original.

692

MESSRS. G. W. and E. G. PECKHAM ON

[Nov. 21,

1. On the Spiders of the Family Attidae of the Island of St. Vincent.

By G. W. and E. G. Peckham.¹

(Received October 24, 1893.)

(Plates LXI . & LXII.)

The Spiders of the family Attidae described in the following paper were collected on the Island of St. Vincent by Mr. Herbert H. Smith, the collector sent out by Mr. F. DuCane Godman to assist the Committee for the Exploration of the Fauna and Flora of the West Indian Islands, appointed by the British Association and by the Royal Society.

The Committee has agreed to place a full series of these Spiders in the British Museum.

We had expected to have made this collection the basis of a discussion of the relations of the Spiders of the West Indian Islands to those of the mainland, but the material in our hands is too scanty to warrant any important conclusions. We hope, before long, to receive enough material to make the discussion desirable.

In making the measurements we have used the metric system. All measurements of length in this document are in mm.

***SYNEMOSYNA SMITHI*, sp. nov.** (Plate LXI. figs. 1–1*b*.)

♂ and ♀. Length 4.2. Length of cephalothorax 1.8; width of cephalothorax 0.9.

¹Communicated by D. Sharp, F.R.S., F.Z.S., on behalf of the Committee for Investigating the Flora and Fauna of the West India Islands.

Legs, ♂ and ♀, 4, 3, 1, 2. The femur of the fourth leg is enlarged, especially in the male.

The cephalothorax is narrow and long—twice as long as wide. The sides are nearly parallel until the posterior quarter of the thoracic part, where the cephalothorax grows abruptly narrower. The cephalic part is on a higher plane than the thoracic and has its sides inclined inwards. The thoracic part is rounded in its anterior three-fourths, the posterior end, where it joins the abdomen, being flattened. There is a constriction at a little distance behind the dorsal eyes. The quadrangle of the eyes is nearly equally wide and long, is wider behind than in front, and occupies about one-third of the cephalothorax. The first row of eyes is strongly bent; the eyes are close together, the middle being twice and a half as large as the lateral. The second row is nearer the first than the third row. The dorsal eyes are larger than the lateral and form a row which is as wide as the cephalothorax at that place. The clypeus is narrow. The labium is wider than long. The sternum is long and narrow. The abdomen is very long and has a constriction in the middle; it is narrowest in front, tapering gradually toward the anterior end. The integument of the anterior part is slightly hardened above, on the sides, and below. The falces are moderately stout and long and are vertical.

The cephalic plate and the anterior thoracic part are yellow, with the eyes on black spots; there are some white hairs on the anterior part; between the dorsal eyes are two fine dark lines; the rest of the upper surface is brown, darkening toward the posterior end, with a thin covering of white hairs, and having white bands around the two constrictions. The spinnerets are light-coloured. The legs are white or light brown, excepting the femoral joints of the third and fourth pairs, which are rufous. The falces are reddish. The palpi, mouth-parts, and coxae are white. The sternum and venter are yellowish, the venter being blotched with white.

***KEYSERLINGELLA MINUTA*, sp. nov.**

♀. Length 3. Length of cephalothorax 1.3; width of cephalothorax 0.8.
Legs 4, 3, 1, 2, all slender.

The cephalothorax is rather short, with a slight constriction just behind the dorsal eyes. The cephalic part is flat, and is on a higher plane than the thoracic which is rounded, and falls quite steeply from the ridge behind the constriction. The sides are parallel. The abdomen is rounded, and is widest behind the middle and narrow at both ends. The clypeus is narrow. The quadrangle of the eyes is one-fourth wider than long, is wider behind than in front, and occupies about one-half of the cephalothorax. The first row is curved; the eyes are close together, the middle twice as large as the lateral. The second row is halfway between the first and the third. The dorsal eyes are larger than the lateral and are on the sides of the head. The sternum is wide and is truncated

in front. The maxilla are twice as long as the labium. The labium is as wide as long.

The cephalothorax is dark rufous. In alcohol the abdomen is transversely banded with dark and pale rufous, with a wide dark band near the posterior end. When dried the anterior half is rufous with two transverse curved bands of white hairs; behind the second of these is a wide blackish band and between this and the spinnerets the colour is rufous. The palpi are pale. The legs are light rufous, the first pair unmarked, the second, third, and fourth with a black line running along the anterior face.

This spider is immature, but seems to belong to the genus *Keyserlingella*.

***DYNAMIUS METALLICUS*, sp. nov.** (Plate LXI. figs. 2–2c.)

♂. Length 6.8. Length of cephalothorax 3; width of cephalothorax 2.4.
Legs 3, 4, 2, 1, nearly equal in length; the first three pairs stouter than the fourth.

The cephalothorax is high and convex. The cephalic part is inclined forward and has the sides nearly vertical and parallel. The thoracic part has a nearly plane semicircular plate behind the dorsal eyes, from which it rounds downward on the sides and behind; it is very much narrower on the upper surface than below, the sides being concave. The quadrangle of the eyes is a little wider in front than behind, is one-fourth wider than long, and occupies not quite two-fifths of the cephalothorax. The eyes are all large. The first row is plainly curved with the eyes a little separated, the middle being less than twice as large as the lateral. The second row is halfway between the first and third rows. The dorsal eyes are a little smaller than the lateral and form a row which is not quite so wide as the cephalothorax, although it is as wide as the upper surface. The clypeus is two-thirds as high as the middle eyes of the first row. The falces are slightly retreating, short and not very stout. The sternum is wide and is truncated in front and behind. The maxillae are short and are widely separated. The labium is fully as wide as long.

The whole appearance of this spider is big, black, and burly. The cephalothorax is ornamented with a pair of snow-white spots on the cephalic and another on the thoracic part, while the sides are encircled by a wide white band. On the black abdomen is a pattern in yellowish white with a tinge of red, consisting of an encircling band, a central, longitudinal, dorsal band, which in the posterior half is broken up into spots, and a curved transverse band on each side of the dorsum behind the middle. The palpus has the femur and the proximal end of the patella covered with white hairs. The first two pairs of legs have the joints much enlarged and rounded; in the third pair they are also enlarged but are lengthened out; the first, second, and third pairs have fringes of white hairs, and have all the joints, excepting the tarsi, iridescent, with brilliant violet reflections. Some of this iridescence is also seen on

the upper surface of the cephalic part. The under surface is black.

***CYBELE* gen. nov.**

The cephalothorax is rounded, convex and rather high, highest at the dorsal eyes; the cephalic part is plainly inclined. The quadrangle of the eyes is slightly wider in front than behind, is one-fourth wider than long, and occupies two-fifths of the cephalothorax. The middle eyes of the first row project beyond the lateral and almost touch each other; the lateral are a little separated from the middle (more widely in *vincenti* than in *obscura*); they are unusually large, almost two-thirds as large as the middle eyes. The second row of eyes is nearer the third than the first row.

Cybele bears some resemblance to *Amycus*, but its general appearance is not so rounded, its sides are more nearly parallel, and the eyes of the first row are more nearly of a size, the middle ones of this row in *Amycus* being twice as large as the lateral. It also recalls *Hasarius*, but in this latter genus the eyes of the first row are much smaller and the thoracic part is flatter.

***CYBELE OBSCURA*, sp. nov.** (Plate LXI. figs. 3—3c.)

♂. Length 7. Length of cephalothorax 3; width of cephalothorax 2.

♀. Length 7. Length of cephalothorax 2.8; width of cephalothorax 2.

Legs, ♂ 1, 3, 4, 2, ♀ 3, 4, 1, 2, all nearly equally long. The first and second are a little the stoutest.

The cephalothorax has its sides nearly vertical in front, but in the thoracic part they are rounded out, more plainly than in *vincenti*; its widest point is a little behind the dorsal eyes. The thoracic part falls a very little in the first third of its length and then slants steeply. The first row of eyes is straight. The dorsal eyes are a little smaller than the lateral and are placed on the sides of the cephalothorax, which, however, is wider than this row below. The clypeus is half as high as the middle eyes of the first row. The falcis in both sexes are vertical, parallel, and rather long and stout, with short fangs. The maxillae are considerably longer than the labium and are widened at the extremities. The sternum is not much longer than wide, but is not so nearly round as in *vincenti*.

In colour and marking *C. obscura* is a good deal like *vincenti*. The cephalothorax is bright red, with a white band on each side and a third in the central thoracic region. The abdomen is covered with white and red hairs, giving it a tawny look; the anterior end is black and has two pairs of white bars, one above the other, and a bunch of black hairs projecting toward the cephalothorax. A line of fine white chevrons formed of hairs is faintly visible down the central line of the dorsum. The legs are brown, mottled and barred with red, white, and black. The tarsus and proximal end of the metatarsus of the first are not pale as in *vincenti*, and there is

no fringe of hairs on the underside. The spinnerets are long and pale, the outer ones having a dark line along the external side.

A common species.

The two species of *Cybele* may be distinguished from each other by the following points:—In *C. vincenti* the thoracic part slants steeply from the dorsal eyes, while in *C. obscura* it falls gradually at first; in *C. vincenti* the falcis of the male are oblique and diverging, in *C. obscura* vertical and parallel; and in *C. vincenti* the palpus of the male has the tarsus twice as long as the tibia and not much longer than wide, while in *C. obscura* it is three times as long as the tibia and twice as long as wide, projecting for some distance beyond the bulb.

***CYBELE VINCENTI*, sp. nov.** (Plate LXI. figs. 4—4d.)

♂. Length 6. Length of cephalothorax 2.8; width of cephalothorax 2.

♀. Length 6.5. Length of cephalothorax 2.5; width of cephalothorax 1.8.

Legs, ♂ 1, 4, 3, 2, ♀ 4, 3, 1, 2. The first leg is stouter than the others and, in the male, is longer than the second by the metatarsus and tarsus.

The cephalothorax has its sides nearly vertical in front and slightly rounded out in the thoracic part; it is widest, as well as highest, at the dorsal eyes, and from this point it falls quite steeply, the slope being slightly rounded out. The first row of eyes is a little curved; the lateral eyes of this row are relatively a little smaller than those of *obscura*. The dorsal eyes are a little larger than the lateral and are placed on the sides of the cephalothorax, forming a row that is as wide as the cephalothorax at that place. The clypeus is one-fourth as high as the middle eyes of the first row. The patella and tibia of the male palpus are of the same length, and taken together are shorter than the tarsus, which is twice as long as wide; the palpal tube is very long. The falcis of the male diverge widely and have long fangs; they are vertical and rather stout; those of the female are short, parallel, vertical, and rather stout, with short fangs. The maxillae are not much longer than the labium. The sternum is almost round.

The markings vary considerably in different spiders of this species, and some are much darker coloured than others. The cephalothorax in the male is covered with brilliant red hair and has a snowy white band on each side and another in the central thoracic part. The abdomen is covered with a mixture of grey, red, and tawny hairs; around the anterior end is a curved white band, and from this a central, longitudinal, white band extends backward to about the middle of the dorsum. Sometimes a central band of white figures appears on the posterior half, with two dark rufous spots on each side. The clypeus has a fringe of white hairs on the lower edge. The falcis are brown. The legs are banded with lighter and darker brown, the first and second being somewhat darker than the third and fourth. The first leg has

the tarsus and the proximal end of the metatarsus pale, and has fringes of black hair under the femur and the tibia. The spines are black.

In the female the whole spider is lighter coloured, the integument being brown, and there is less of the bright red than in the male. The ground-colour of the abdomen is a soft velvety reddish brown. The markings are like those of the male, and are equally variable. In both sexes the spinnerets are rather short, the external ones being covered with brown and the middle ones with white hairs.

A common species.

***DENDRYPHANTES OCTO-PUNCTATUS*, sp. nov.** (Plate LXI. figs. 5—5i.)

♂. Length 5.5. Length of cephalothorax 2.5; width of cephalothorax 2. Some males are considerably smaller, having a total length of about 3.5.

♀. Length 4.4. Length of cephalothorax 2; width of cephalothorax 1.8.

Legs, ♂ 1, 4, 2, 3; the first is stouter than the others and, especially in the larger variety, is much the longest, exceeding the second by the tarsus, metatarsus, and nearly all of the tibia; the others are nearly equal. ♀ 4, 1, 2, 3; the first is a little the stoutest.

The cephalothorax is scarcely longer than wide; the sides are curved, the widest point being behind the dorsal eyes. It is high, the highest point being at the dorsal eyes, the cephalic part falling slightly toward the first row of eyes, while the thoracic part rounds backward and downward quite abruptly in its first third and then falls still more steeply. The whole of the upper surface is rounded. The quadrangle of the eyes is one-third wider than long, is wider behind than in front, and occupies a little more than two-fifths of the cephalothorax. The first row of eyes is a little curved; the middle eyes are separated slightly from each other and more widely from the lateral eyes. The lateral are a very little more than one-half as large as the middle eyes. The second row of eyes is nearer the first than the third row. The third row is plainly not so wide as the cephalothorax at that place. The clypeus is narrow. The falcies of the male are stout, rather long, with long strong fangs, diverging and somewhat obliquely directed forward, so that they are sometimes visible from above; those of the female are rather stout and long, parallel, and vertical. The sternum is oval. The maxillae are fully twice as long as the labium and are rounded. The labium is longer than wide.

In the male the integument is of a rich dark brown colour. The upper surface of both cephalothorax and abdomen seems to have been covered with yellow hairs or scales. There are two wide snow-white bands on the sides of the cephalothorax, and a curved white band around the anterior end and the sides of the abdomen. On the dorsum are eight dark spots on a light ground,

four in a transverse row across the anterior part and two on each side, farther back. The two middle spots of the transverse band are frequently joined together. There are some red hairs around the eyes of the first row, and the front faces of the first legs; the palpi and the falces are all covered with snow-white rice-like scales, so that the spider presents a very showy appearance from in front. The legs are brown with a good many white scales, the first pair being darker coloured than the others.

The female has the integument of the cephalothorax dark brown, while that of the abdomen is commonly yellowish. The whole surface is covered with white scale-like hairs, excepting that on the abdomen there are eight black spots, four in a transverse row across the middle of the dorsum and two on each side, farther back. The legs are yellowish. The clypeus is covered with rather long white hairs, which hang down a little way over the falces.

The general appearance of this species is much like that of *Dendryphantes capitatus*, Hentz. It seems to be very common in St. Vincent.

HASARIUS PAYKULLI, Aud. in Sav. Descr. De l'Egypte, 2^e édit. xxii. p. 172.

A cosmopolitan species.

CYRENE, gen. nov.

The cephalothorax is only moderately high; from its highest point, at the dorsal eyes, it falls forward to the first row of eyes and backward for about two-thirds of the length of the thoracic part, the forward inclination being a little more pronounced than the backward. The final fall to the posterior border is steep. The sides are nearly vertical and parallel in the cephalic part, but are a good deal rounded out in the thoracic, the widest point being considerably behind the dorsal eyes. The quadrangle of the eyes is equally wide in front and behind, is barely one-fourth wider than long, and occupies two-fifths of the cephalothorax. The first row of eyes is straight, the middle eyes being about twice as large as the lateral and close together, while the lateral are a little separated from them. The second row is halfway between the first and the third row. The dorsal eyes are about as large as the lateral, and form a row which is nearly as wide as the cephalothorax at that place.

This genus is close to *Maevia*, but the cephalothorax has a more rectangular appearance, the lower edge being almost straight.

CYRENE DECORATA, sp. nov. (Plate LXII. figs. 6—6b.)

♀. Length 5.8. Length of cephalothorax 2.2; width of cephalothorax 1.4.

Legs 4, 3, 1, 2, nearly equally stout, the femoral joints of the first and second being a little thickened.

The clypeus is one-fourth as high as the middle eyes of the first row. The falces are moderately long and stout, vertical and

parallel. The sternum is narrowed and truncated in front and rounded behind. The maxillae are twice as long as the labium, which is short, wide, and squarely truncated. The abdomen is widest in the middle.

The cephalic part is bright red. There is a wide white band on each side and a central white band on the thorax; the rest of the thoracic part is darker than the cephalic, but is decidedly reddish. The abdomen has a black curved band around the anterior end, and above this a snow-white band. The upper surface is bright red, with two longitudinal black bands from the middle of the dorsum to the spinnerets, between which the surface is bronzed, and a number of snow-white spots which form a handsome and effective pattern (see drawing). Two of these are in the middle of the abdomen just in front of the bronze region; two more appear at the edge of the bronze region on each side; and two larger spots, also snow-white, are found on each side of the abdomen in the red region.

The middle spinnerets are pale, the external ones black. The legs are light coloured, irregularly dotted with black. The clypeus is covered with long white hairs. The falces and mouth-parts are dark reddish brown. The sternum is light brown. The venter covered with white hairs and is dotted with black.

A single specimen.

We have examples of this species in the Smith collection from Santarem, the Brazilian variety being larger. It has a general resemblance to *Euophrys coronigera* of C. Koch.

EUOPHRYS (?) PULCHELLA, sp. nov. (Plate LXII, figs. 7, 7a.)

♂. Length 3. Length of cephalothorax 1.5; width of cephalothorax 1.
Legs 4, 3, 1, 2.

The cephalothorax is high and looks rather long and heavy compared to the abdomen. The sides are nearly parallel and vertical, but widen out a little at the posterior end. The highest point is at the dorsal eyes. The cephalic part is gently inclined, and the anterior two-thirds of the thoracic part falls a little more abruptly. The final slope of the thoracic part to the margin is steep. The four anterior eyes are close together in a curved row; the lateral are two-thirds as large as the middle eyes. The second row is a little nearer the third than the first row. The third row is as wide as the cephalothorax at that place, the eyes being nearly as large as the lateral eyes of the first row. The clypeus is narrow. The falces are short, vertical, and parallel. The sternum is wide, slightly rounded in front and pointed behind. The maxillae are widely separated and are truncated at the extremities. The labium is very small and is as wide as long.

Our single specimen of this species is so badly rubbed that the colour can only be guessed at. The cephalothorax is dark brown with a black line around the lower margin, and seems to have been pretty well covered with white hairs. The abdomen is lighter

brown, with a pale herring-bone stripe down the middle of the dorsum and a good many white hairs on the sides. The legs and palpi are light brown, the legs having some dark rings. The falces are dark brown. The under surface is light brown.

This spider is immature. It is not a very good *Euophrys*, but as it is near that genus we put it there provisionally.

***CYDONIA*, gen. nov.**

The cephalothorax is low and is almost flat above. The cephalic part is very slightly inclined, and the thoracic part falls scarcely at all in the anterior half and then slopes abruptly to the margin. The sides are narrowest in front; they widen a little just behind the dorsal eyes and then contract gradually as they pass backward; in the cephalic part they slant inward, but in the thoracic part they are gently rounded. The quadrangle of the eyes is wider behind than in front, is one-fifth wider than long, and occupies one-half of the cephalothorax. The four anterior eyes are placed close together in a straight row, the middle being nearly twice as large as the lateral. The second row is nearer the first than the third row. The dorsal eyes are fully as large as the lateral eyes of the first row and are placed on the margin of the cephalothorax. The labium is longer than wide.

Cydonia is somewhat like *Epiblemum*, but differs from that genus in that the quadrangle of the eyes is wider behind than in front and occupies one half of the cephalothorax.

***CYDONIA LUTEOLA*, sp. nov.** (Plate LXII, figs. 8–8e.)

♂. Length 3. Length of cephalothorax 1.5; width of cephalothorax 1.

♀. Length 3.8. Length of cephalothorax 1.5; width of cephalothorax 1.

Legs, ♂ ♀, 4, 1, 3, 2. The first pair is much the stoutest in both sexes, all the joints excepting the metatarsus and tarsus being thickened.

The clypeus is narrow. The falces are only moderately long and stout; in the male they diverge and are directed obliquely forward, the fang being as long as the falx; in the female they are vertical and parallel with the fang, short. The sternum is oblong. The maxillae are rounded and are less than twice as long as the labium. The abdomen is long in proportion to the cephalothorax and is about twice as long as wide.

The cephalothorax is black in the cephalic region, shading into rufous behind; the upper surface is covered with bright yellow hairs and there is a band of white hairs on each side. The abdomen is light brown covered with silvery down, and on each side is a longitudinal white band. Touching these lateral bands are two pairs of short white bands or spots, the first pair near the middle and the second near the spinnerets. The first leg has the

femur, tibia, and a ring at the distal end of the metatarsus rufous, the remainder being pale; in the female the rufous is not so dark as in the male. The other legs are pale. The palpus of the male is black covered with white hairs, excepting the tarsus, which is pale. The palpus of the female is all pale. In both sexes the falces are dark rufous and glossy.

MARPTUSA MELANOGNATHA, H. Lucas, Webb and Berthelot's Hist. Nat. des Iles Canaries, tome ii, p. 29, pl. vii. fig. 4.

A cosmopolitan species.

ANOKA, gen. nov.

The cephalothorax is not high and is not much longer than wide; the sides widen out gradually from the lateral eyes to their widest point, which is behind the dorsal eyes; they slant outward more widely in the thoracic than in the cephalic part. The cephalic part is inclined forward; the thoracic is level for two-thirds of its length and then falls rather steeply. The quadrangle of the eyes is one-third wider than long, is a little wider behind than in front, and occupies two-fifths of the cephalothorax. The first row of eyes is straight, with the middle eyes subtouching and less than twice as large as the lateral, which are a little separated from them. The second row is about halfway between the first and third rows. The third row is narrower than the cephalothorax at that place, the eyes being a little farther from each other than from the lateral borders. Abdomen long and slender.

We have species of *Anoka* from various parts of the United States, from Jamaica, St. Vincent, Barbados, and New Granada. They all resemble each other very strongly, even the patterns and colours being often reproduced. The relative length of the legs is 1, 4, 2, 3 or 1, 4, 3, 2 in both sexes. The males are more slender than the females and have the first legs much longer and stouter than the others and, usually, dark coloured, the other legs being pale. The males also, in all the species except *A. mitrata* and an unpublished species from Jamaica, have the falces long and horizontal; in the Jamaica species they are oblique, and *mitrata* has the falces vertical and the first legs pale. The mouth-parts are always dark coloured.

Anoka is related to *Icius* and *Menemerus*, but in *Icius* the eyes of the first row are larger, the cephalothorax has the sides more nearly parallel and the thoracic part differently shaped (see drawing), and the abdomen is not so long and slender. In *Menemerus* the sides dilate suddenly behind the third row of eyes, the thoracic part slants more steeply from the dorsal eyes and is wider behind, although not so wide as in *Icius*, and the cephalic part is more steeply inclined.

ANOKA VERNALIS, sp. nov. (Plate LXII. figs. 9–9d.)

♂. Length 4.8. Length of cephalothorax 1.8; width of cephalothorax 1.5.

♀. Length 5. Length of cephalothorax 2.1. Width of cephalothorax 1.8.

Legs, ♂ ♀, 1, 4, 3, 2; first pair much the stoutest and longest, especially in the male.

The falces of the male are long, longer in some specimens than in others, and horizontal. Their inner edges are parallel for about one-half their length and then diverge; at this point is a tooth, which points forward and crosses the one on the opposite falx. The fang is long and slender and is slightly curved at the extremity. Those of the female are vertical, parallel, and moderately long and stout. The sternum is rather long, and is widest in the middle. The maxillae are nearly twice as long as the labium. The labium is longer than wide.

The colour of the male is bronze-brown. A snow-white band on each side extends throughout the whole length of the cephalothorax and abdomen, the cephalothorax having a dark line around the lower margin. The eyes of the first row are surrounded by white hairs. The falces are bronze, slightly rugose above, with a band of white hairs along the outer side of each. The fangs are black. The first legs are bronze above and blackish below, and are thinly covered with white hairs. The other legs are light yellowish brown.

The female has the cephalothorax and abdomen thickly covered with a mixture of white, red, and yellow hairs. On the anterior part of the abdomen are two pairs of black dots, and across the posterior part, halfway between the middle point and the spinnerets, is a transverse black band. The legs are yellowish brown, the first pair being the darkest and having some short white hairs.

***PROSTHECLINA PYGMAEA*, sp. nov.** (Plate LXII. figs. 10–10e.)

♂. Length 3. Length of cephalothorax 1.5; width of cephalothorax 1.

♀. Length 3.7. Length of cephalothorax 1.7; width of cephalothorax 1.3.

Legs, ♂ 1, 4, 3, 2, ♀ 3, 4, 1, 2; almost equally stout in both sexes.

The cephalothorax is high, the highest point being at the dorsal eyes; it is widest in front. The cephalic part is strongly inclined forward and projects over the lower margin, the sides and clypeus slanting inward. The thoracic part falls a little in the anterior two-thirds and then drops abruptly behind; the lateral slopes of this part are slightly rounded out. The quadrangle of the eyes is one-fourth wider than long, is plainly wider in front than behind, and occupies a little less than one-half of the cephalothorax. The four anterior eyes are close together and form a curved row; they are not very unequal in size, the lateral being about two-thirds as large as the middle eyes. The front face of the cephalothorax is so inclined that the eyes of this row look downward. The second row is plainly nearer the third than the first row, and the eyes are placed on the sides of the cephalothorax.

The sternum is large and almost round. The maxillae are short and broad. The labium is very small and about as wide as long. The clypeus is about one-fourth as high as the middle eyes of the first row. The falces are moderately long and stout; they are parallel and are inclined backward.

This spider is black, ornamented with a handsome pattern in white. The cephalothorax of the male has white bands encircling the sides, a white band across the cephalothorax above the first row of eyes, another passing down the middle of the thorax, and a shorter curved band on each side, which passes up from the lateral band between the eyes of the second and third rows, and then divides, joining the band across the cephalic part in front and the thoracic band behind. The abdomen has also a number of white bands. There is a central one down the middle; a curved band on each side which joins the central one before and behind; and a transverse bar a little behind the middle, joining the central to the lateral bands, and thus dividing the dorsal surface of the abdomen into two posterior and two larger anterior black spots, surrounded by white. The legs are of rather a bright rufous. In the male the anterior faces of the tibial joints of the third pair are covered with black hairs. In the female all the femoral joints are blackish. The tibia of the palpus is covered with snow-white hairs, and there is a fringe of white hairs on the edge of the clypeus. The white band above the first row of eyes is also visible from the front, so that the face view is very striking. In the female the general colouring is like that of the male, excepting that the white band above the anterior row of eyes is lacking.

***NEON POMPATUS*, sp. nov.** (Plate LXII. figs. 11–11c.)

♂. Length 2.5. Length of cephalothorax 1.2; width of cephalothorax 1.

♀. Length 3.2. Length of cephalothorax 1.2; width of cephalothorax 0.8.

Legs, ♂ 1, 4, 3, 2, ♀ 4, 1, 3, 2; first pair a little the stoutest.

The cephalothorax is high, with the cephalic part inclined forward, and the thorax falling but slightly for a very short distance behind the dorsal eyes, and then more steeply, in a long slant, to the posterior border. The quadrangle of the eyes is about equally wide in front and behind, is one-fifth wider than long, and occupies a little more than one-half of the cephalothorax. The first row of eyes is straight; the eyes are all close together and are all small, the middle being less than twice as large as the lateral. The dorsal eyes are larger than the lateral, and form a row which is as wide as the cephalothorax that place. The eyes of the second row are nearer the dorsal than the lateral eyes. The clypeus is very narrow. The falces are short, weak, parallel and vertical. The labium is as wide as long. The sternum is nearly round. In the female the abdomen looks wide and heavy when compared with the cephalothorax.

The cephalothorax is black in the cephalic and brown in the thoracic part, sometimes thinly covered with white hairs, and having some white and rosy hairs around the eyes of the first row; around the lower border is a black line and above this is a white line. The cephalothorax seems to have been entirely covered with very brilliant iridescent scales of a rosy-golden colour, and has two white spots on each side and one just in front of the spinnerets. The legs are medium brown, the first one, in the male, being blackish on the under surface.

This is a very small spider. It does not altogether agree with the genus *Neon*, the dorsal eyes being not very large, and the slope from the dorsal eyes being less abrupt.

***LYSSOMANES*, sp. inc.**

This is an immature specimen of the subgenus *Jelskia*. The species cannot be determined. The relative length of the legs is 1, 2, 3, 4; the first leg is long and spined. The colour was probably grass-green in life, but has faded to pale yellow.

EXPLANATION OF THE PLATES.

PLATE LXI.

- Fig. 1. *Synemosyna smithi* (p. 692), dorsal view of male; 1a, dorsal new of female; 1b, epigynum.
- Fig. 2. *Dynamites metallicus* (p. 694), dorsal new of male; 2a, face and falces; 2b, side view of cephalothorax; 2c, palpus.
- Fig. 3. *Cybele obscura* (p. 695), dorsal view of male; 3a, face and falces; 3b, side view of cephalothorax; 3c, palpus.
- Fig. 4. *Cybele vincenti* (p. 696), dorsal view of male; 4a, abdomen of a variety of the male; 4b, dorsal view of young female; 4c, epigynum; 4d, palpus.
- Fig. 5. *Dendryphantes octo-punctatus* (p. 697), dorsal view of female; 5a, dorsal view of variety of female; 5b, dorsal view of male; 5c, dorsal view of variety of male; 5d, face and falces; 5e, side view of cephalothorax; 5f, epigynum; 5g, variety of epigynum; 5h, palpus; 5i, variety of palpus.

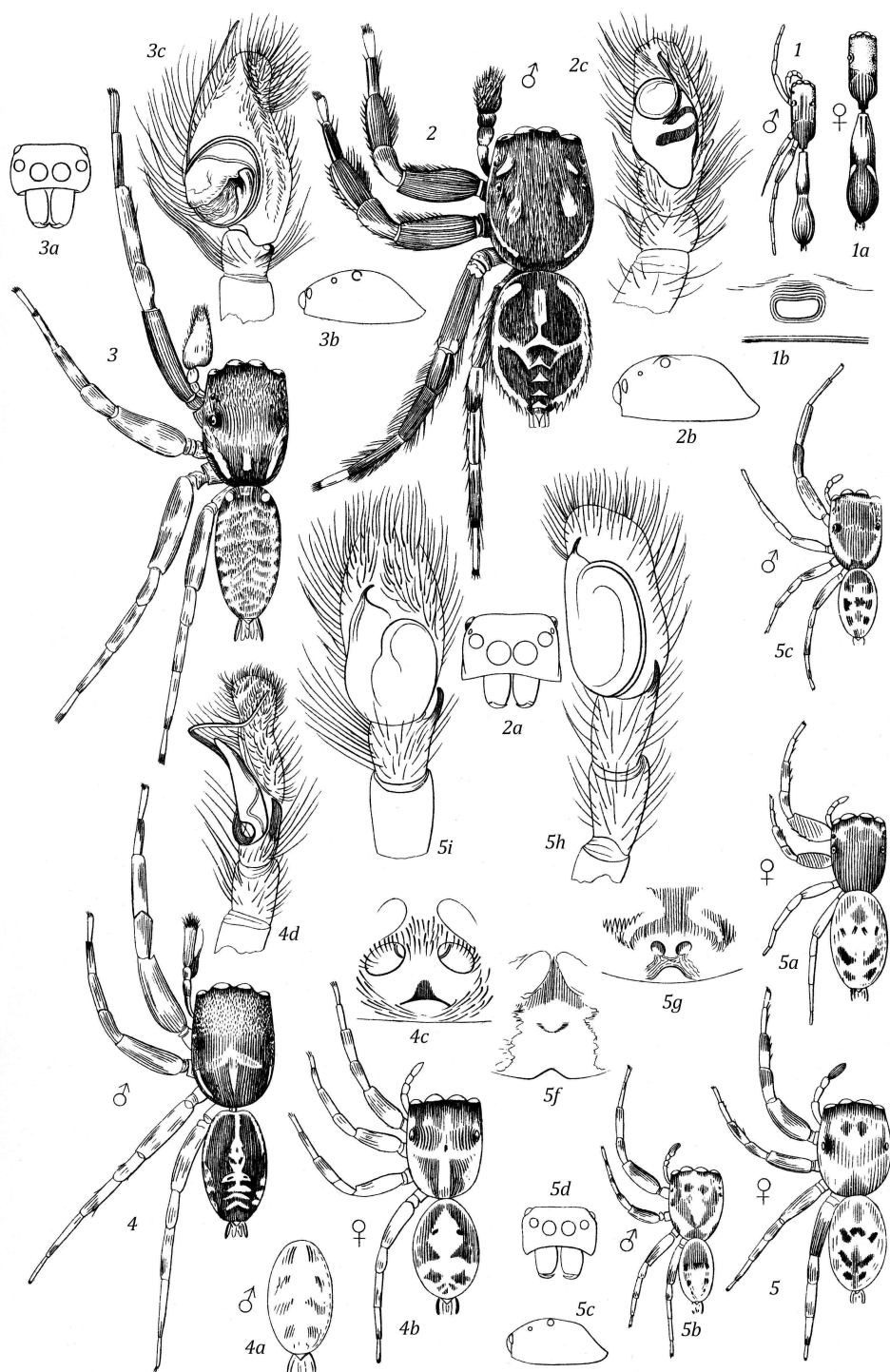
PLATE LXII.

- Fig. 6. *Cyrene decorata* (p. 698), dorsal view of female; 6a, face and falces; 6b, side view of cephalothorax.
- Fig. 7. *Euophrys (?) pulchella* (p. 699), dorsal view of male; 7a, palpus.
- Fig. 8. *Cydonia luteola* (p. 700), dorsal view of female; 8a, dorsal view of male; 8b, face; 8c, side view of cephalothorax; 8d, epigynum; 8e, palpus.
- Fig. 9. *Anoka vernalis* (p. 701), dorsal new of female; 9a, abdomen of variety of female; 9b, dorsal view of male; 9c, epigynum; 9d, palpus.
- Fig. 10. *Prostheclina pygmaea* (p. 702), dorsal view of female; 10a, dorsal view of young male; 10b, face and falces; 10c, side view of cephalothorax; 10d, epigynum; 10e, palpus.
- Fig. 11. *Neon pompatus* (p. 703), dorsal view of female; 11a, dorsal view of male; 11b, epigynum; 11c, palpus.

For reference in this digital edition, figure captions from page 704 are repeated opposite each respective plate.

PLATE LXI.

- Fig. 1. *Synemosyna smithi* (p. 692), dorsal view of male; 1a, dorsal new of female; 1b, epigynum.
- Fig. 2. *Dynamites metallicus* (p. 694), dorsal new of male; 2a, face and falces; 2b, side view of cephalothorax; 2c, palpus.
- Fig. 3. *Cybele obscura* (p. 695), dorsal view of male; 3a, face and falces; 3b, side view of cephalothorax; 3c, palpus.
- Fig. 4. *Cybele vincenti* (p. 696), dorsal view of male; 4a, abdomen of a variety of the male; 4b, dorsal view of young female; 4c, epigynum; 4d, palpus.
- Fig. 5. *Dendryphantes octo-punctatus* (p. 697), dorsal view of female; 5a, dorsal view of variety of female; 5b, dorsal view of male; 5c, dorsal view of variety of male; 5d, face and falces; 5e, side view of cephalothorax; 5f, epigynum; 5g, variety of epigynum; 5h, palpus; 5i, variety of palpus.

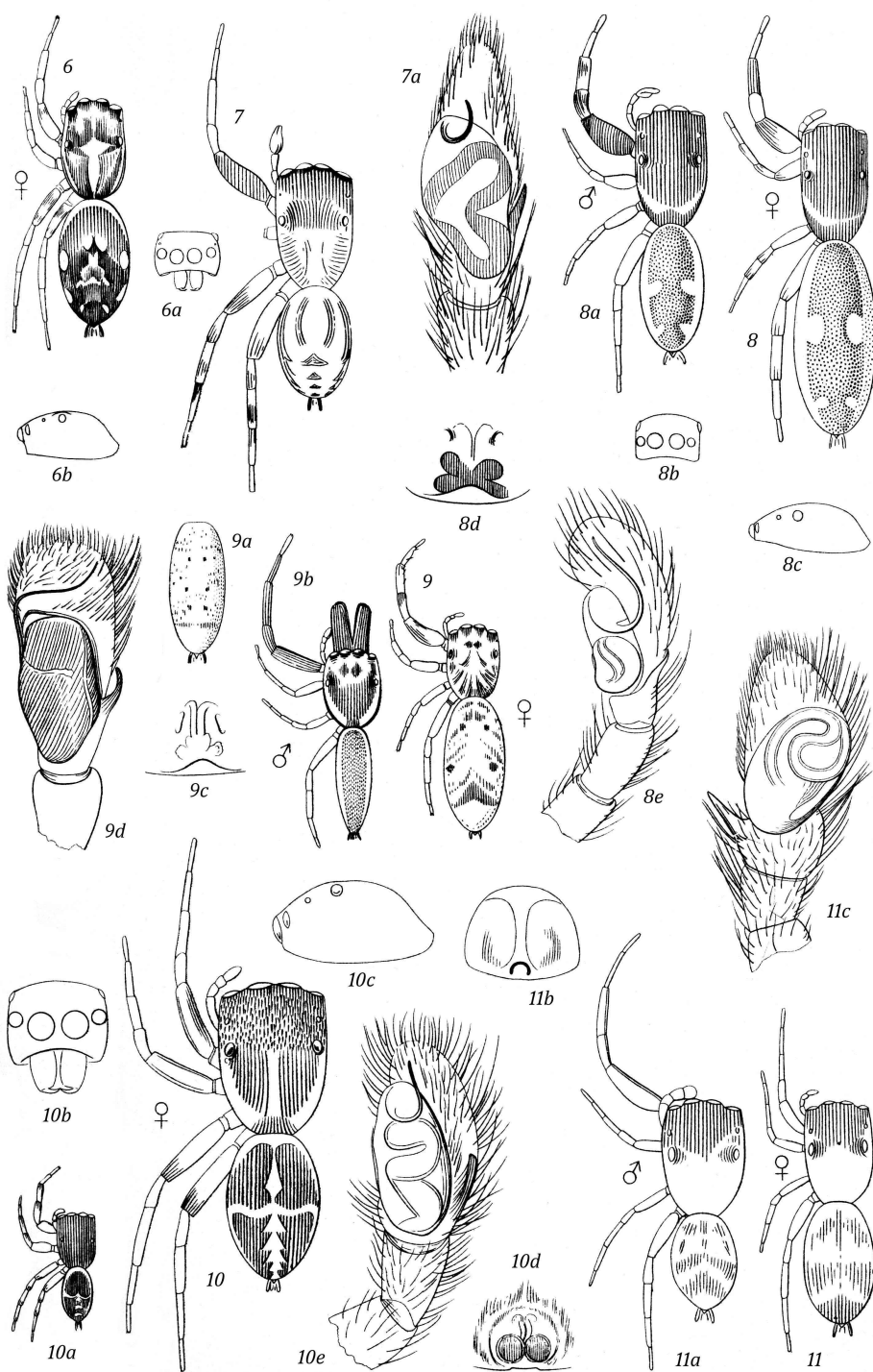


Edwin Wilson. Cambridge.

SPIDERS OF THE FAMILY ATTIDAE FROM ST. VINCENT

PLATE LXII.

- Fig. 6. *Cyrene decorata* (p. 698), dorsal view of female; 6*a*, face and falces; 6*b*, side view of cephalothorax.
- Fig. 7. *Euophrys (?) pulchella* (p. 699), dorsal view of male; 7*a*, palpus.
- Fig. 8. *Cydonia luteola* (p. 700), dorsal view of female; 8*a*, dorsal view of male; 8*b*, face; 8*c*, side view of cephalothorax; 8*d*, epigynum; 8*e*, palpus.
- Fig. 9. *Anoka vernalis* (p. 701), dorsal new of female; 9*a*, abdomen of variety of female; 9*b*, dorsal view of male; 9*c*, epigynum; 9*d*, palpus.
- Fig. 10. *Prostheclina pygmaea* (p. 702), dorsal view of female; 10*a*, dorsal view of young male; 10*b*, face and falces; 10*c*, side view of cephalothorax; 10*d*, epigynum; 10*e*, palpus.
- Fig. 11. *Neon pompatus* (p. 703), dorsal view of female; 11*a*, dorsal view of male; 11*b*, epigynum; 11*c*, palpus.



Edwin Wilson. Cambridge.

SPIDERS OF THE FAMILY ATTIDAE FROM ST. VINCENT